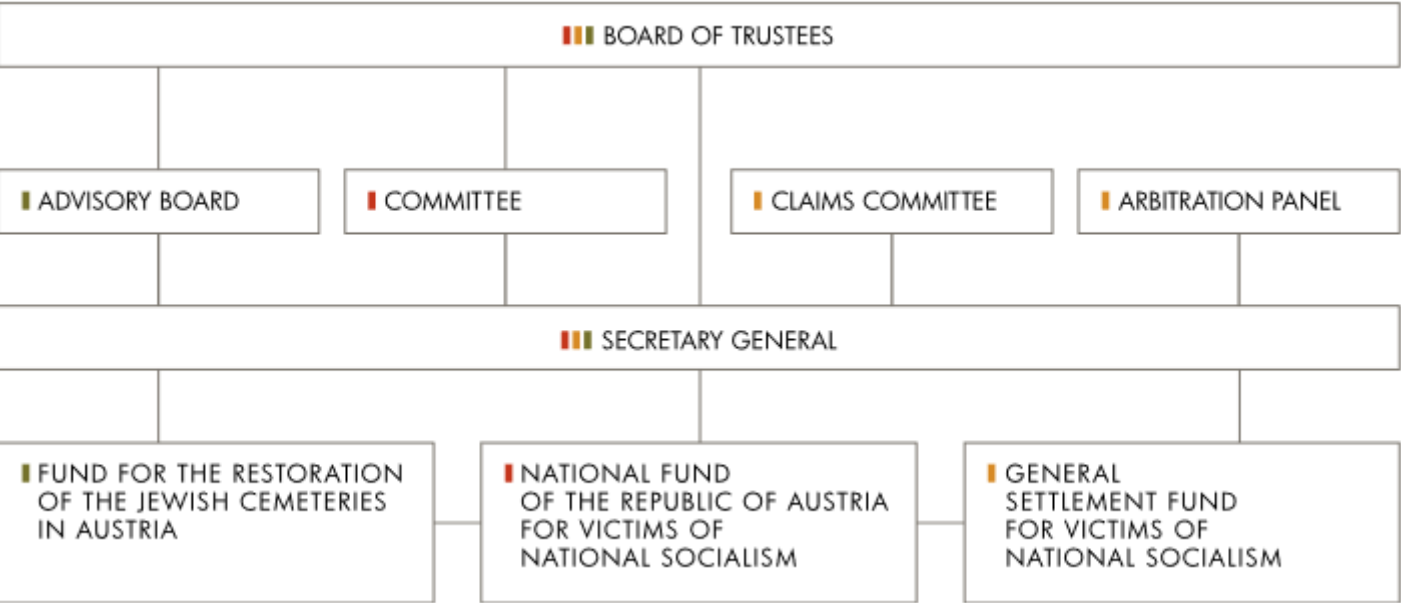




Organs of the General Settlement Fund

The organs of the General Settlement Fund were the Board of Trustees, the Secretary General and the Claims Committee. Furthermore, an Arbitration Panel for the examination of applications for *in rem* restitution of publicly-owned property was established with the General Settlement Fund.



Control Committee

The members of the Control Committee are proposed by the Chairperson of the Board of Trustees and appointed by the Board for the duration of one legislative period. Its task is to assist the Board of Trustees in ensuring the funds are used for their designated purpose.

The Control Committee consists of at least two members, who do not have to be members of the Board of Trustees.

Personnel composition

Members

Dr. Richard Bock, Auditor and tax advisor

Dr. Alfred Finz, State Secretary, retired