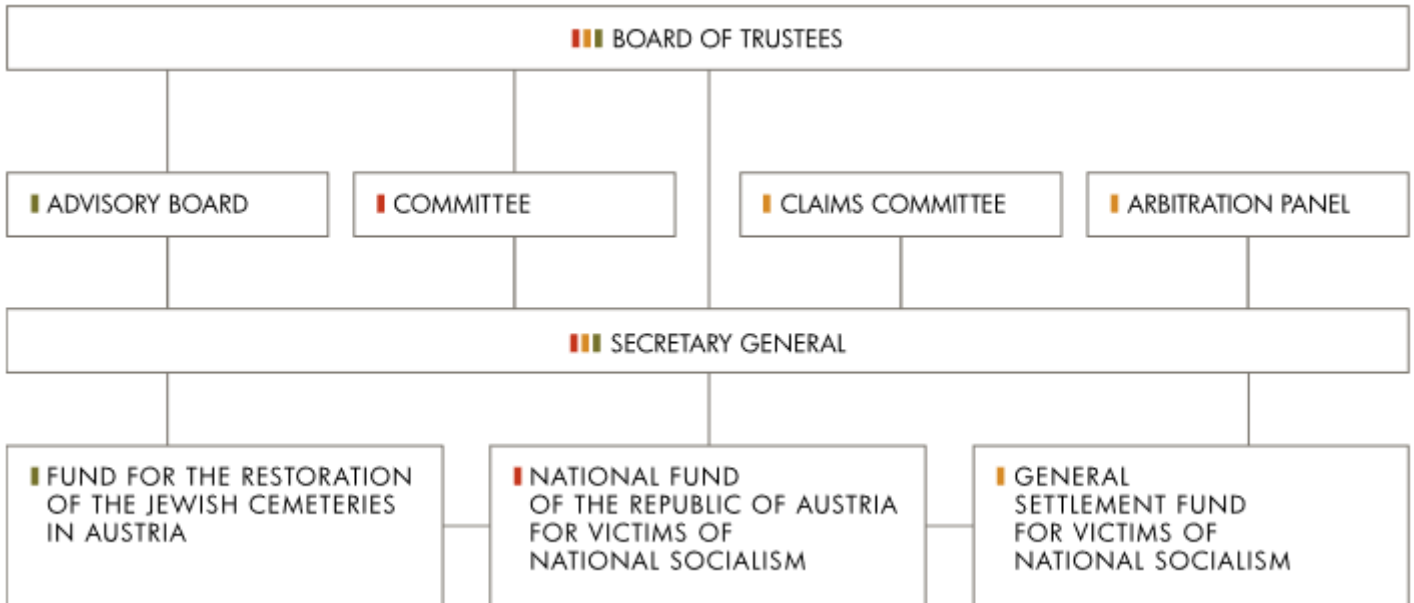


## Organs of the General Settlement Fund

The organs of the General Settlement Fund are the Board of Trustees, the Secretary General and the Claims Committee. Furthermore, an Arbitration Panel for the examination of applications for in rem restitution of publicly-owned property has been established with the General Settlement Fund.



### Secretary General

The Secretary General assists the Chairperson of the Board of Trustees and prepares the decisions of the Board of Trustees and the Committee of the National Fund in accordance with Sec. 6 (1) of the National Fund Law. The Secretary General is appointed by the President of the National Council following consultation with the National Council's Presidial Conference. The Secretary General is also has the task of fostering relations between Austria and the victims of National Socialism who live abroad.

### Personnel composition

Mag.a Hannah M. Lessing, Secretary General

Dr.in Renate S. Meissner, Deputy Secretary General and Scientific Director of the National Fund